



CASA VERDE

PRE-DEVELOPMENT DESIGN FOR PUEBLO, COLORADO USA



SUSTAINABLE DESIGN INTELLIGENCE 

THE PROPERTY

The Casa Verde is 1100 sq ft of pure sustainable design intelligence! It consists of 2 master suites with en-suite baths and walk-in closets and a great room in the middle with kitchen, dining room, and living room.

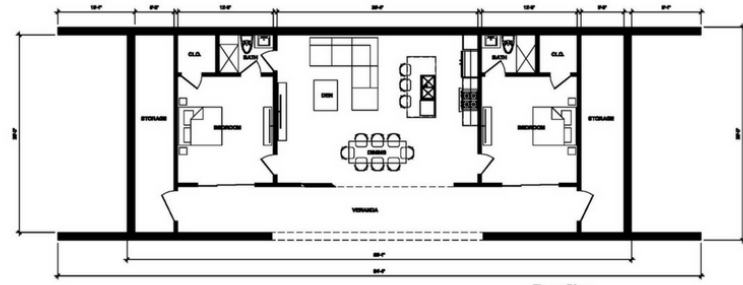
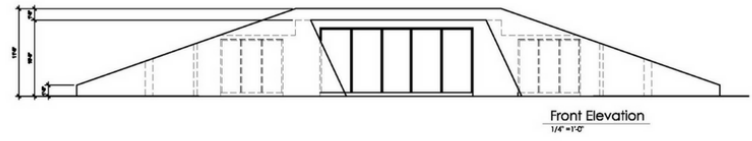
KEY FACTS

- 2 master suite bedrooms
- 2 bathrooms
- Single Family Home
- Open concept
- Kitchen, dining & living
- Full Basement
- Solar & Wind 400kwh

SUSTAINABLE

- Large cistern in basement
- Green catchment system for water management
- Mix of solar and wind with output of over 400 kwh
- Composting septic system for waste management
- Geothermal cooling & heating system

SUSTAINABLE DESIGN INTELLIGENCE

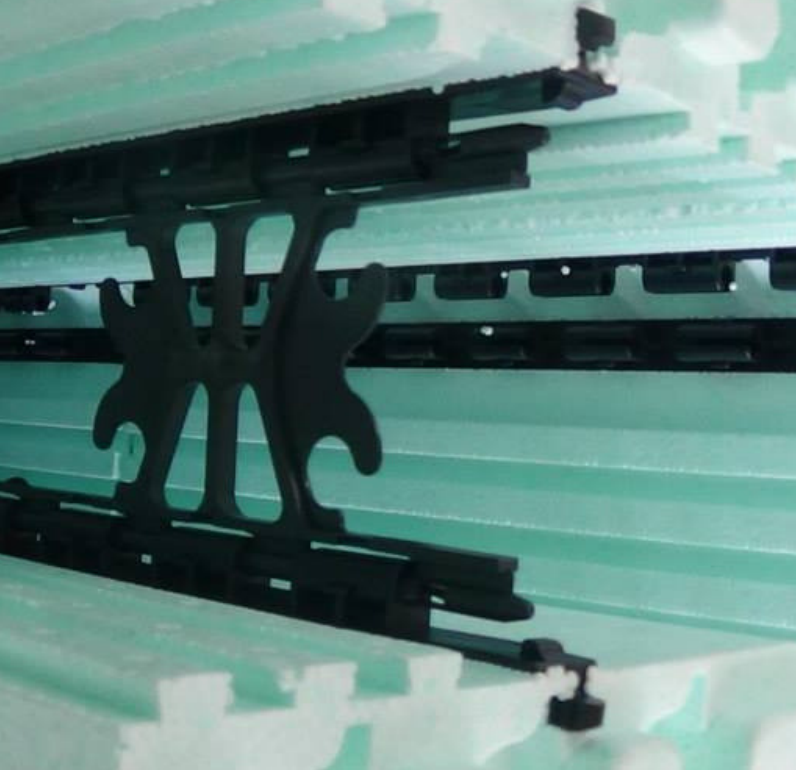


CASA VERDE



The interior and exterior finishes can be built to order from flooring, cabinetry, trimwork, appliances, electrical and plumbing.

INSULATED CONCRETE FORMS (ICFS)



INSULATED CONCRETE FORMS

The core and shell of the home uses Nudura Insulated Concrete Forms along with Insuldeck, an insulated concrete form for ceilings and roofs. The walls are 6" ICF's with a green roofing system for an R rating of over 50.

WANT TO LEARN MORE?

JEFF HOWELL • DIRECTOR OF DEVELOPMENT
(805) 907 1022 | jeff@pueblosustainablesolutions.com



This symbol indicates a core housing initiative for PSS L3C

